



Kroll Version 10 Service Pack 18

Feature notes

September 2019

Table of Contents

Kroll Version 10 Service Pack 18 Feature Notes	3
User Interface	3
[55907] Suboxone reimbursement modification	3
[52554] Pharmacare – Frequency of Dispensing	4
[54346] Addition of a configuration option that would require only a pharmacist to cancel a pickup Rx	5
[52702] When processing multiple Rx extensions for the same patient, a Fee for Service can now be applied for each Rx extension (Newfoundland and Labrador)	5
[36522] Functionality has been added to automatically purge processed inbound documents and completed outbound faxes	6
[32312] A Hardcopy status message has been added when an Rx is first filled, then cancelled and Unfilled ..	6
[46644] The Fill/Refill/Unfill actions now warn users when a previous fill's Workflow state is not completed ...	6
[53577] 'Influenza Immunization Consent' enhancement.....	6
[52346] Show the bin number that picked up Rxs were in prior to being picked up	7
[55027] Prompt created to copy the intervals forward from the copied from Rx to the Copied to Rx	7
[55774] New fields have been added to AQPP Data extract (Quebec)	7
[54037] Increase Patient Quick Code Length (BioScript Pharmacy Ltd)	7
[9685]LPG Invoice Ordering specification is now implemented	7
[51077] The 'BC Pharmanet Special Auth Codes' will be sent to Green Shield.	8
[54084] The maximum allowable Rx total has been increased from \$10 000 to \$99,999.99 for an SPDP-only Rx.....	9
[FBL-35740] Pharmacist association rules have been relaxed for licensed technicians	9
[KRL-955] Invitation prompt will now be displayed to set up password recovery using the Google Authenticator application	10
Reports, Labels and Hardcopies	11
[50343] Drug Inventory listing report – Calculation of on hand quantity values have been modified	11
[54601] Calgary Health Region Claims Invoice	11
[54291] Printing of Opioid Education Handouts has been adjusted	11
[54226] Compliance Label Report enhancement	11
[39330] Hardcopy Report now includes audit tracking boxes	11
[55065] 'Print Check List' Report option has been added to the Dispill Report.....	12
[53835] Printing the Opioid handout and auxiliary label is now excluded when patient is in a true Nursing home	13
Miscellaneous	14
[54266] We have now provided the ability to document comment/reason as part of the purge process.....	14

[54430] Users now have the ability to specify multiple active ingredients on a mixture card..... 14

[FBL-37885] New Imperial BC Purchase Order Format..... 15

Kroll Version 10 Service Pack 18 Feature Notes

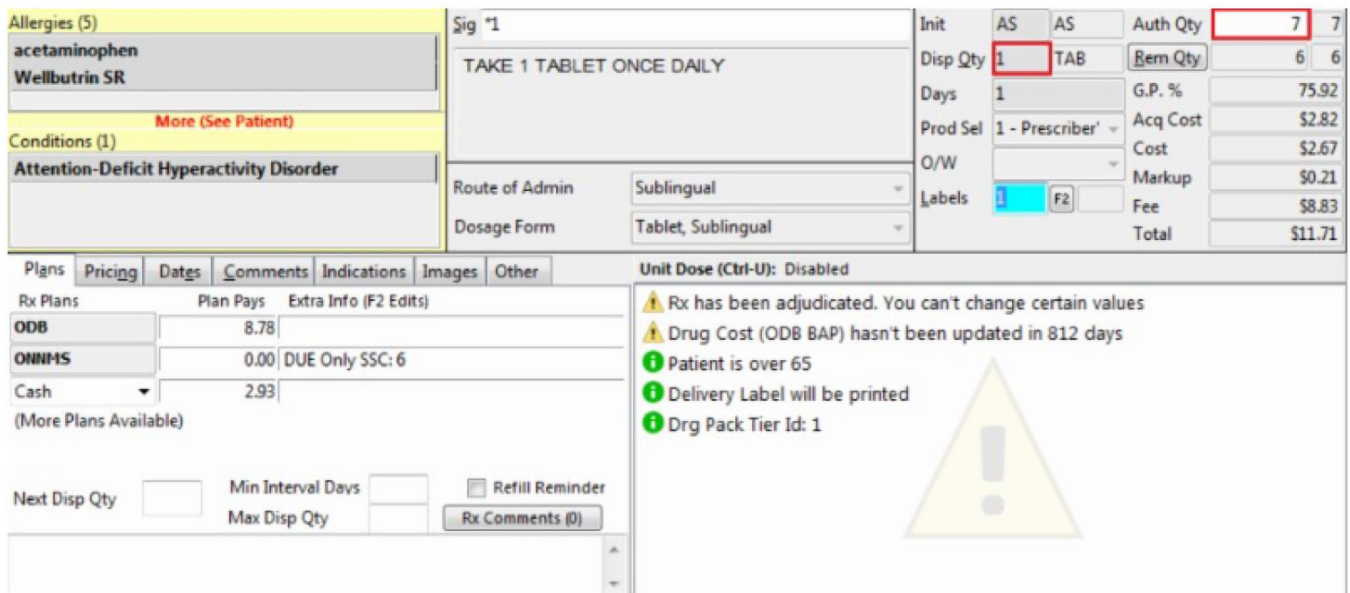
This document is a compilation of changes and enhancements in Kroll Version 10 Service Pack 18. It is intended to keep users abreast of changes to the software and to help users implement and adapt to those changes.

User Interface

[55907] Suboxone reimbursement modification

Feature: ODB has confirmed that they will now only accept two claims in any one day for Suboxone (and its generic equivalents): 1 claim for the witnessed dose and 1 claim that is representative of ALL Carry doses. The current Suboxone carries functionality within Kroll™. Currently, up to 7 claims can be sent, one for the witnessed dose and up to 6 more representing each carry dose. ODB has confirmed that more than 2 claims for a patient in a single day will trigger the audit process. To assist with this process, with the implementation of V10 SP18, the Suboxone Carries option under the RX menu option will be greyed out and not available when Payer = ODB. It will remain available for all other payers. For the time being, the following is a suggested approach to processing Suboxone (and its generic equivalents) prescriptions with carries when the Payer = ODB:

1. Set up a Suboxone prescription with the 'Dispense Quantity' equal to the quantity being given as the witnessed dose and the 'Auth Quantity' equal to the total number of tablets being given (witnessed quantity + sum of carries quantity). For example: if the Rx calls for 1 witnessed dose of one tablet and 6 carries of 1 tablet each, the 'Dispense Quantity' will be set to 1 and the 'Auth Quantity' will be set to 7.

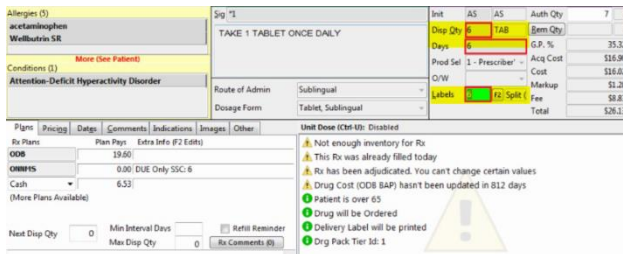


Auth Qty	Disp Qty	Rem Qty	G.P. %	Acq Cost	Cost	Markup	Fee	Total
7	1	6	75.92	\$2.82	\$2.67	\$0.21	\$8.83	\$11.71

2. Process the witnessed dose prescription.

3. Immediately afterward, process the next prescription for the carries with the following parameters:

- Dispense Quantity equal to the quantity given for all carries
- Days equal to the number of carries
- Labels set to the number of carries with inventory evenly split across labels
- Manually add the “UA” intervention code into the appropriate field of the Rx Plan Information screen



Unit Dose (Ctrl-M): Disabled	Auth Qty	7	1
Not enough inventory for Rx			
This Rx was already filled today			
Rx has been adjudicated. You can't change certain values			
Drug Cost (ODS SAP) hasn't been updated in 812 days			
Patient is over 65			
Drug will be Ordered			
Delivery Label will be printed			
Drp Pack-Tier Id: 1			

4. Once all of the labels are generated AND it is your standard to note the Ingest Date on the label, hand write the Ingest date on each label before affixing to the vial.

[52554] Pharmacare – Frequency of Dispensing

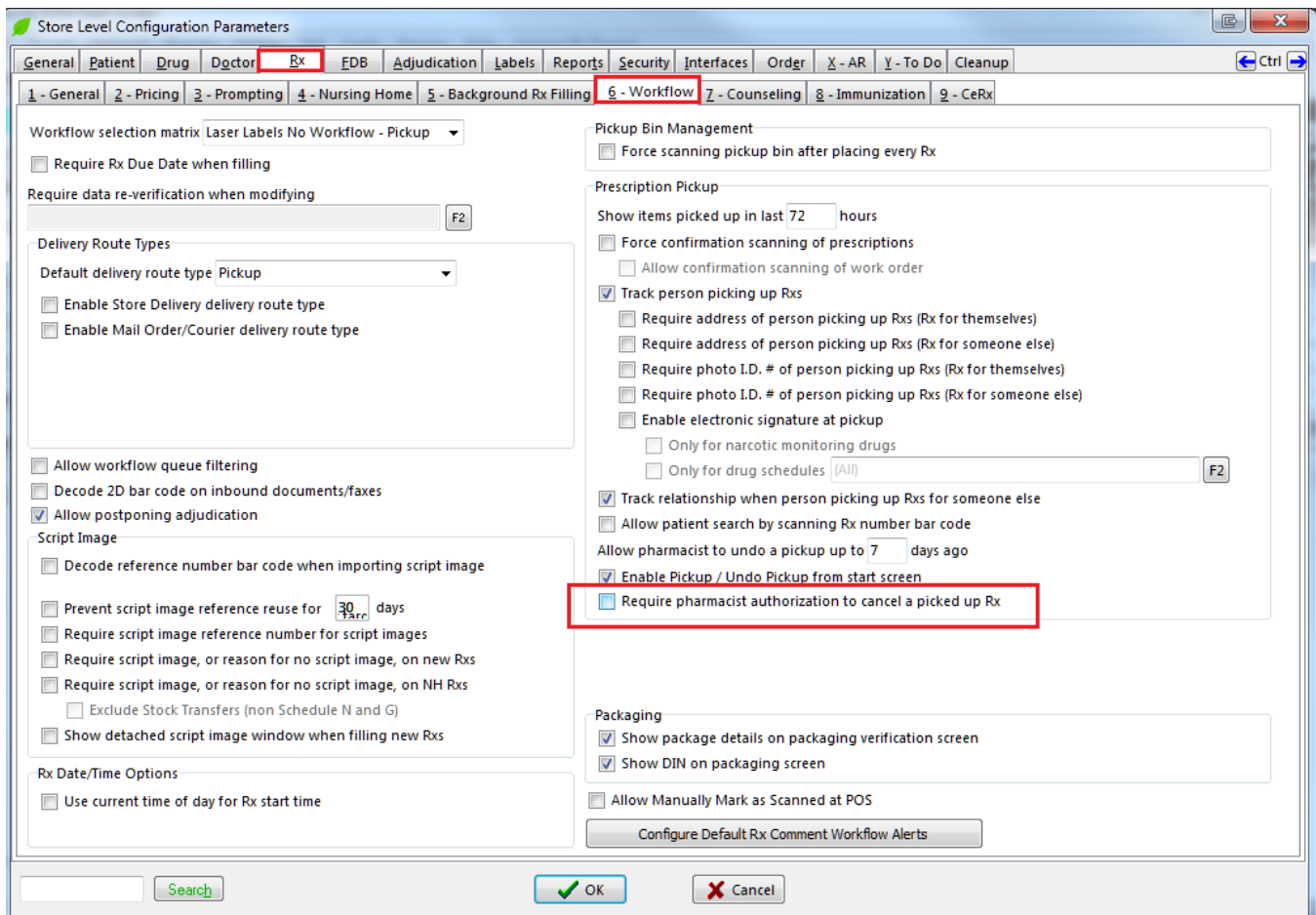
Feature: Added the frequency of dispensing functionality for British Columbia Pharmacare to the Patient Consent menu.

- Frequency of Dispensing consent can now be attached to a patient card, this can be added through **F3- Patient > Consents > Ins > Frequency of Dispensing**.
- Pharmacy can select who the consent was initiated by, reasons, effective date and add notes.
- When a prescription is populated with a day supply of 2 to 28 days and no Frequency of Dispensing Consent is recorded on the patient card, a Warning is displayed indicating ‘Days Supply < 29. May require FOD consent’. If a consent is recorded, no warning is displayed.
- A Prescriber Notification can be generated from the Frequency of Dispensing consent form, pharmacy can select a specific Doctor(s) to send to. Once sent, a FOD Consent record will be saved under Patient Documents for that doctor.
- If a prescription is populated with a day supply of 2 to 28 days and there is no recorded FOD consent for the prescribing Doctor in Patient Documents, a warning will be displayed indicating ‘FOD consent needs to be sent to this prescriber’. If a FOD consent exists for the prescribing Doctor, no warning would be displayed.

[54346] Addition of a configuration option that would require only a pharmacist to cancel a pickup Rx

Feature: A configuration option has been added to allow only Pharmacists to cancel a picked up Rx.

- Located under **Configuration > Store > Rx > Workflow > 'Require a pharmacist authorization to cancel a picked up Rx.**



Note: The addition of this option, now allows non-pharmacist users to cancel an Rx that has been picked up, when the option is disabled.

[52702] When processing multiple Rx extensions for the same patient, a Fee for Service can now be applied for each Rx extension (Newfoundland and Labrador)

Feature: Provided the ability to apply a Fee for service for each extended Rx when doing multiple Rx extensions on the same patient.

[36522] Functionality has been added to automatically purge processed inbound documents and completed outbound faxes

Feature: A configuration option under the cleanup tab has been added in store configuration to enable purging of inbound docs/inbound faxes and outbound faxes based on days.

[32312] A Hardcopy status message has been added when an Rx is first filled, then cancelled and Unfilled

Feature: Additional Hardcopy label status messages has been added for Unfilled Rxs.

- unfilled – modify (e.g. sig change) – unfilled
UNFILLED (Modified)
- unfilled – fill – cancel – unfilled
UNFILLED (Re-logged)
- fill – cancel – unfilled
UNFILLED (First Fill)

[46644] The Fill/Refill/Unfill actions now warn users when a previous fill's Workflow state is not completed

Feature: The same functionality has been added identical to the one the Transfer Out currently uses to check for incomplete Workflows for Refill, Inactive, and Suspend.

- By default it will just display a warning that workflows are incomplete, and let you cancel or proceed.
- Also added a configuration to prevent and not allow these functions if workflows are not completed (when checked).
- Multi Rx windows (suspend ,inactivate ,transfer out) will give a warning when clicking the button to suspend, inactivate/transfer the Rxs.
- Multi Rx windows with the Prevent option ON, will skip over Rxs with incomplete workflows exactly the same as other non-eligible Rxs.

[53577] 'Influenza Immunization Consent' enhancement

Feature: The following acknowledgement message has been added on the 'Influenza Immunization Consent Form'.

- 'If your child is less than 9 years of age, and getting the influenza vaccine for the first time, your child will need 2 doses of vaccine this season. They are given at least 4 weeks apart.'

[52346] Show the bin number that picked up Rxs were in prior to being picked up

Feature: We now show the bin number that picked up Rxs were in prior to being picked up.

- This was done for both Rxs and Non-Rx items.
- The bin the item was picked from can be seen from the Fill pickup screen and the Touch pickup screen while the item is still available for viewing.

[55027] Prompt created to copy the intervals forward from the copied from Rx to the Copied to Rx

Feature: When copying an Rx containing a minimum of interval days to a new number, we now prompt if you would like to retain the min interval days if the configuration option is turned on.

- Under **File > Configuration > Rx > Prompting > Copy** > 'Prompt to retain Minimum Interval days when copying Rx' option.

[55774] New fields have been added to AQPP Data extract (Quebec)

Feature: The following fields have been added to AQPP Data extract.

Transaction Code	Pharmacy ID Code	Provider Transaction Date	Trace Number
Client ID or Code	Patient Code	Patient DOB	Patient Gender
New/Refill Code	Prescriber ID	Trace Number	Transaction Code
Reference Number			

[54037] Increase Patient Quick Code Length (BioScript Pharmacy Ltd)

Feature: The Patient Quick Code Length has been increase from 16 to 40 characters when the chain is set to 'BioScript Pharmacy Ltd'.

[9685]LPG Invoice Ordering specification is now implemented

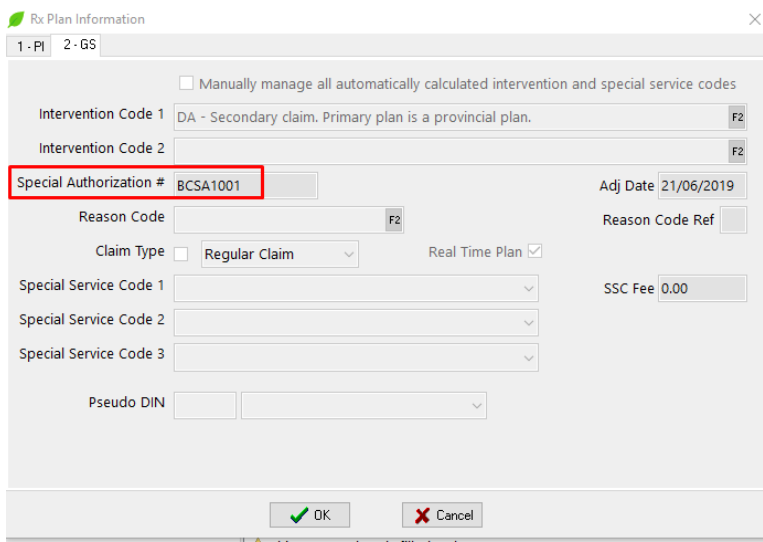
Feature: The 'LPG Invoice/ordering' specification has been implemented.

[51077] The 'BC Pharmanet Special Auth Codes' will be sent to Green Shield.

Features: The 'BC Pharmanet Special Auth Codes' have been added and will be sent to Green Shield. .

- Added a check box field in the Plan Edit screen that is only visible if the prov is set to BC. The Service Pack 10.18 update will enable the check box on the Green shield Plan screen.

- When the field is checked, then the specially coded BCSAXXXX Special Auth codes are automatically inserted and sent in the SANum field when adjudicating.



[54084] The maximum allowable Rx total has been increased from \$10 000 to \$99,999.99 for an SPDP-only Rx

Feature: The maximum limit of the Rx total for SPDP-only Rx has been increased to **\$99,999.99**.

- If Rx only has SPDP plan and Rx Total cost is greater than \$99,999.99, an error message is displayed 'You cannot have Rx cost greater than \$99,999.99.'
- Rxs billed to SPDP only will now allow dispense quantities greater than 9,999
- SPDP Manual Claim Report - The changes are made in this report increase the limit of 'Rx Total Cost' and 'Patient Paid'.

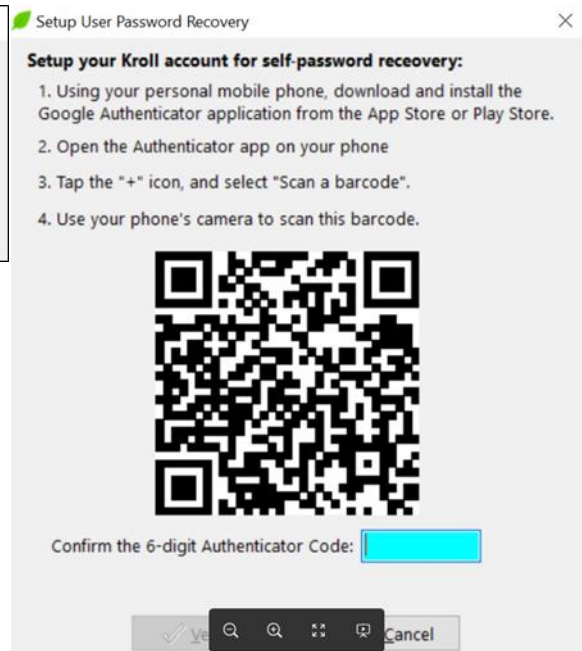
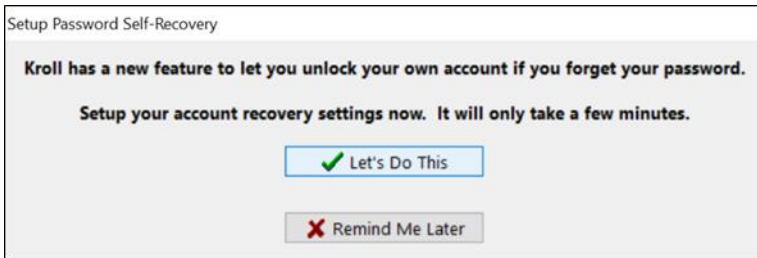
[FBL-35740] Pharmacist association rules have been relaxed for licensed technicians

Feature: Pharmacist association rules have been relaxed to a certain degree for licensed technicians. The following restrictions are still active:

- Preventing un-associated users (all non-pharmacist user types) from completing workflow actions that require sending of a pharmacist license and network related functions.
- Allowing un-associated Licensed Technician users to complete packaging and package verification workflow actions.
- Allowing un-associated Licensed Technician users to complete Data Entry Workflow action from F9-Workflows.

[KRL-955] Invitation prompt will now be displayed to set up password recovery using the Google Authenticator application

Feature: The 'Setup Password Self Recovery' invitation prompt will now be displayed informing users on how to setup their Kroll account for self-password recovery. The following prompt will be displayed when the new 10.18 version is installed, along with the steps to Setup User Password Recovery when the 'Let's do this' option is selected.



Notes:

- The 'Allow Password Recovery With App' option must be enabled under **File > Configuration > Store > Security**.
- Must login as real user, not a super user

Reports, Labels and Hardcopies

[50343] Drug Inventory listing report – Calculation of on hand quantity values have been modified

Feature: Calculation of On Hand Quantity values on the Drug Inventory listing reporting has been changed to reflect if the inventory has been allocated or packaged.

[54601] Calgary Health Region Claims Invoice

Feature: Five more columns are added in 'Calgary Health Region Claims Invoice' export file.

- Added Columns:- 'NHWARD', 'Schedule', 'Prescriber's license number', 'Indication' and 'AHFS Classification'

[54291] Printing of Opioid Education Handouts has been adjusted

Feature: Kroll Care top offset has been added to the Opioid Education Handout.

[54226] Compliance Label Report enhancement

Feature: The Check List report has the option of printing 'Card' or 'Pack' in the left side of the report.

[39330] Hardcopy Report now includes audit tracking boxes

Feature: The audit tracking boxes are now permanently visible under **File > Configuration > Store > Label > Audit Tracking** to be displayed on the Hardcopy Report.

- The Hardcopy Option has been removed from the audit tracking position list
- The audit tracking boxes are now always printed in the Hardcopy Label

Hardcopy Report

Phone: (416) 333-3333 Fax: (416) 333-3333

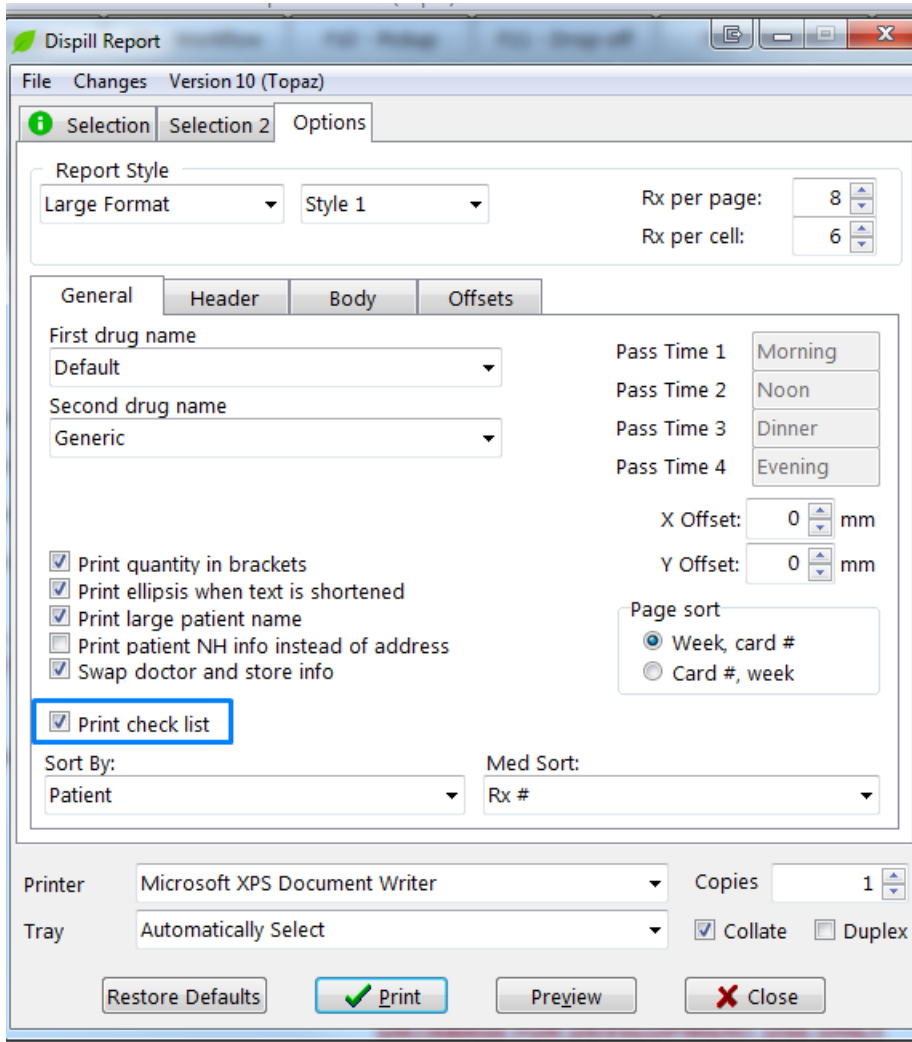
Printed on: 02-05-2019 13:57:46

Rx#	Fill Date	Total	T.P.	Stop Date								
5193	15-Jan-2019 17:25	12.65	0.00									
Start Date: 15-Jan-2019 ASDIRECTED New Rx Rx Comment: Rem Qty: 0 Passtimes/Dose: Mkup: 0.20 Days in Cycle: Auth Qty: 2 AAC: 1.96 Dm: _____ Drg Exp: _____												
<table border="1"> <tr> <td>P</td> <td>Check of entry</td> <td>Rx fill</td> <td>Final check</td> <td>Workflow3</td> <td>Track 0</td> <td>Order Entry</td> <td>Track1</td> </tr> </table>					P	Check of entry	Rx fill	Final check	Workflow3	Track 0	Order Entry	Track1
P	Check of entry	Rx fill	Final check	Workflow3	Track 0	Order Entry	Track1					
5195	16-Jan-2019 16:45	6.62	6.62									
Start Date: 16-Jan-2019 ASDIRECTED Inact Rx Comment: Rem Qty: 1 (1) Passtimes/Dose: Mkup: 0.01 Days in Cycle: Auth Qty: 1 AAC: 0.07 Dm: _____ Drg Exp: _____												
<table border="1"> <tr> <td>P</td> <td>Check of entry</td> <td>Rx fill</td> <td>Final check</td> <td>Workflow3</td> <td>Track 0</td> <td>Order Entry</td> <td>Track1</td> </tr> </table>					P	Check of entry	Rx fill	Final check	Workflow3	Track 0	Order Entry	Track1
P	Check of entry	Rx fill	Final check	Workflow3	Track 0	Order Entry	Track1					
5195	16-Jan-2019 16:45	-6.62	-6.62									
Start Date: 16-Jan-2019 ASDIRECTED Cancelled(Inact)												

[55065] 'Print Check List' Report option has been added to the Dispill Report

Feature: A Print Check list report option has been added to the Dispill Report, in the same way it is in the Compliance report.

- After the Dispill report is printed it will show the check list report screen to set the parameters.
- If the Dispill report mode is by 4 weeks (Passtime - weeks), the columns change to weeks.



[53835] Printing the Opioid handout and auxiliary label is now excluded when patient is in a true Nursing home

Feature: Printing the Opioid handout and Auxiliary label is now being excluded when a patient is associated to a nursing home.

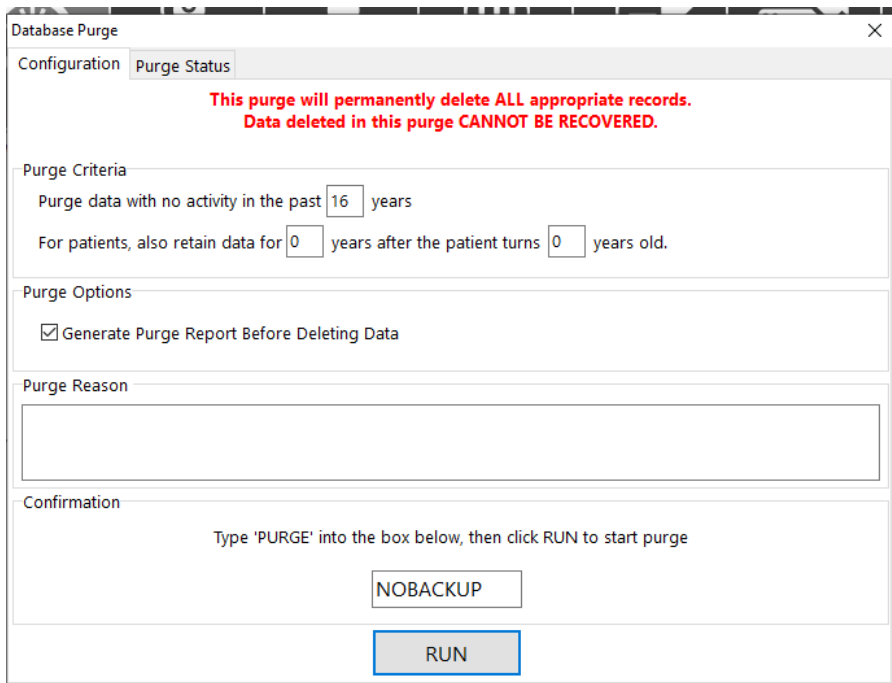
- Nursing Home

- Hospital - In Patient
- Hospital - Out Patient
- Psychiatric Home
- LTC Interim Bed

Miscellaneous

[54266] We have now provided the ability to document comment/reason as part of the purge process

Feature: Users now have the ability to document a comment or reason as the purge request is being finalized. This comment will be saved along with the other data elements that are now saved.



Database Purge

Configuration Purge Status

**This purge will permanently delete ALL appropriate records.
Data deleted in this purge CANNOT BE RECOVERED.**

Purge Criteria

Purge data with no activity in the past years

For patients, also retain data for years after the patient turns years old.

Purge Options

Generate Purge Report Before Deleting Data

Purge Reason

Confirmation

Type 'PURGE' into the box below, then click RUN to start purge

[54430] Users now have the ability to specify multiple active ingredients on a mixture card

Feature: Users now have the ability to specify multiple active ingredients on a mixture card. The 'Active Component for 3rd party has been renamed to 'Main Ingredient'. The main ingredient checkbox is only enabled if the ingredient is Active.

Note: This does not affect DIS provinces. For DIS, only one active ingredient is sent.

[FBL-37885] New Imperial BC Purchase Order Format

Feature: The Imperial BC Purchase Order format has been updated to version 2 to include to 20 characters instead of 10.

1	2	3	4	5	6	7	8	9	10	11	12	13	14	15	16	17	18	19	20
X	X	X	X	A	Y	Y	-	0	0	0	0	9	9	9	9	9	9	9	9
STORE CORPORATE ID																			
SUPPLY OR INVENTORY "I" or S"																			
DEPARTMENT 21 - ? 14 - Pharmacy																			

Notes: Imperial BC will support both versions until version 1 is obsolete.